

Amalgam Restorations placement

• **Mohammad AL-Rabab'ah**

- Assistant Professor-Department of conservative Dentistry.
- BDS, Statutory exam (UK), MFD RCS Ire, MRD(Pros) RCS Ed, PhD.
- malrababah@ju.edu.jo

Aim

- To provide you with the knowledge needed for safe and competent amalgam placement.

Objectives

- To introduce the armamentarium used with amalgam placement.
- To describe the clinical sequence of amalgam placement in occlusal cavities
- To describe the clinical sequence of amalgam placement in inter proximal surfaces.
- To describe the optimal safety management during amalgam placement.

Armamnetrium

- Hand instruments:
Basic examination set

Amalgam carrier



Dappen's dish



Amalgam Condenser



Burnisher



Amalgam carver



Matrix band and retainer



Wedges



Amalgam capsule



When activated

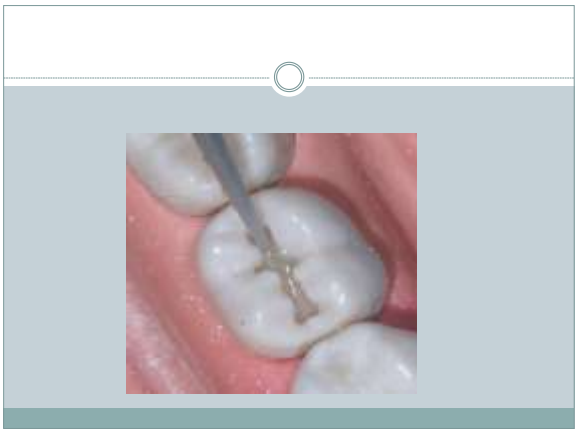
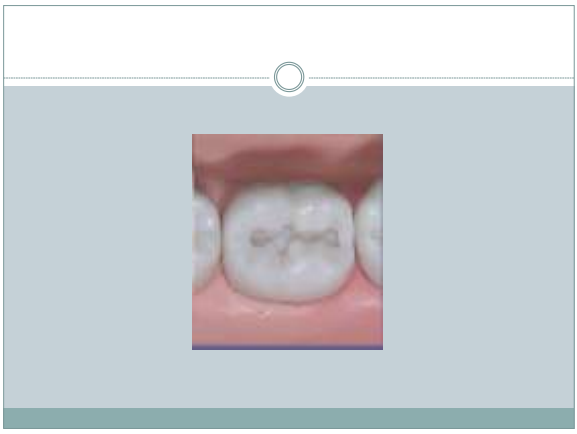


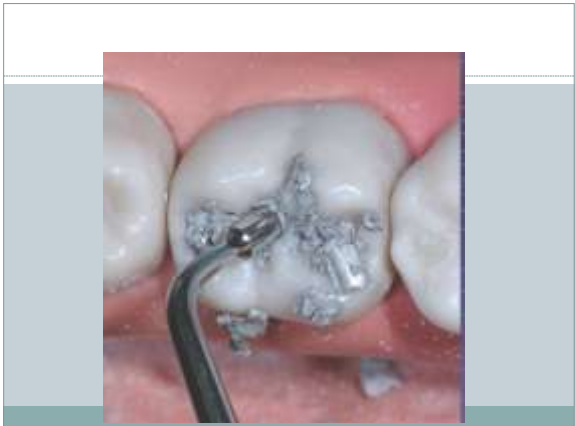
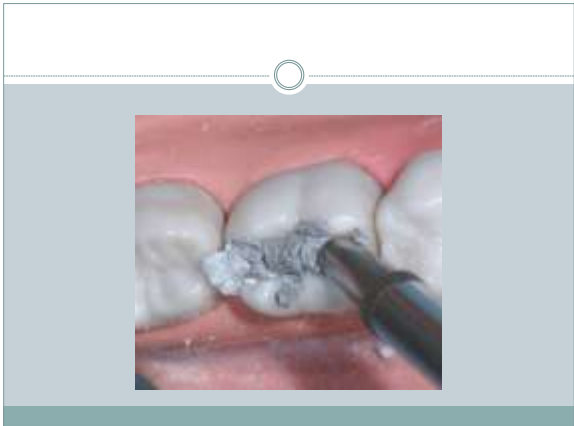
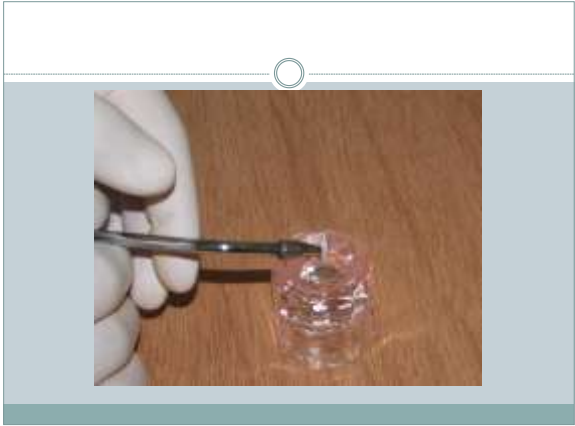
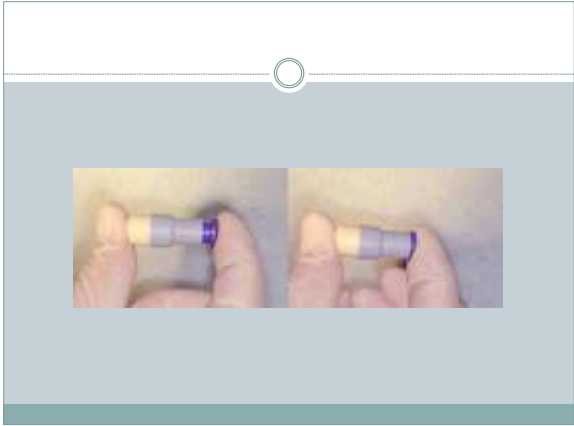
Amalgamator

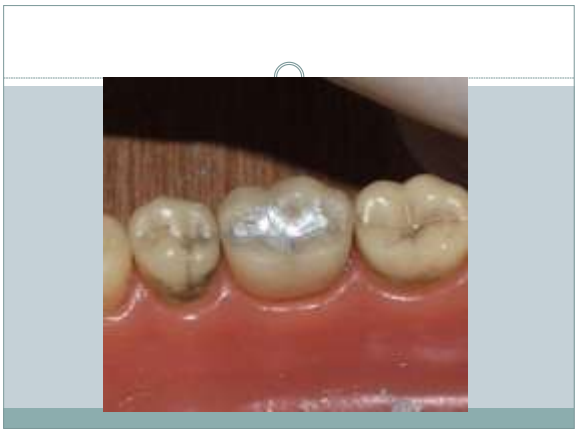
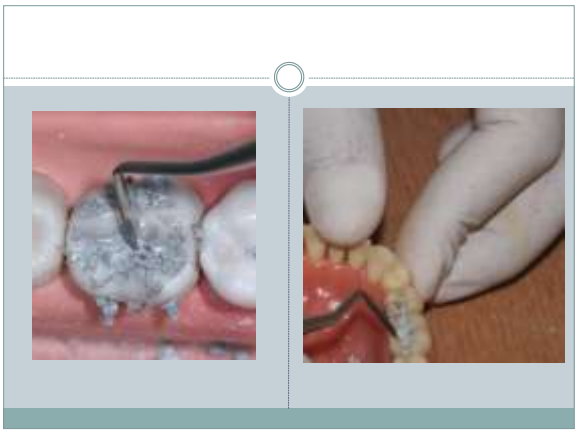
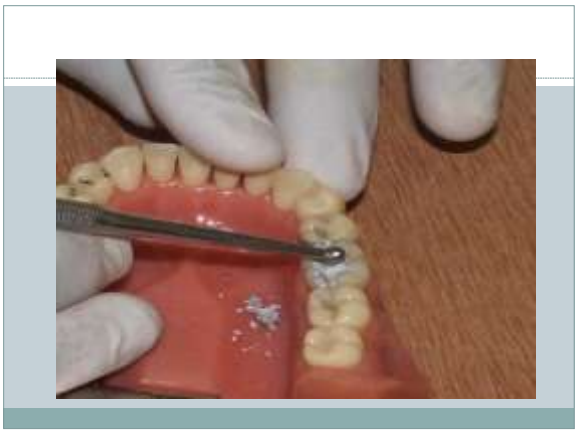




Amalgam placement in occlusal cavities





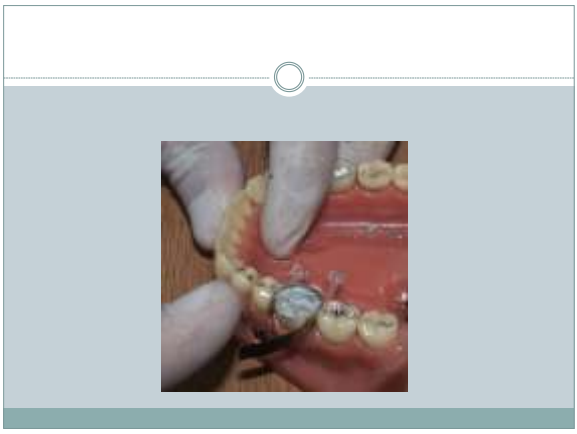
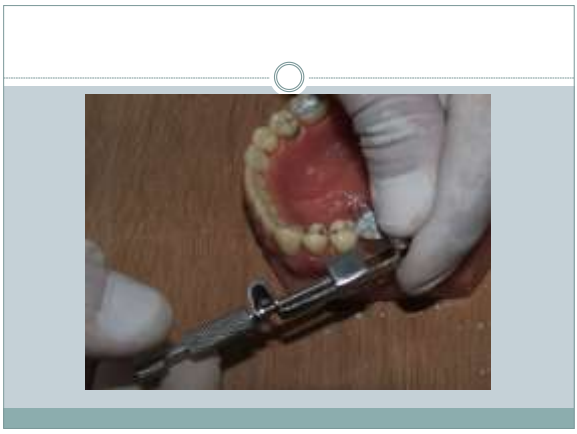
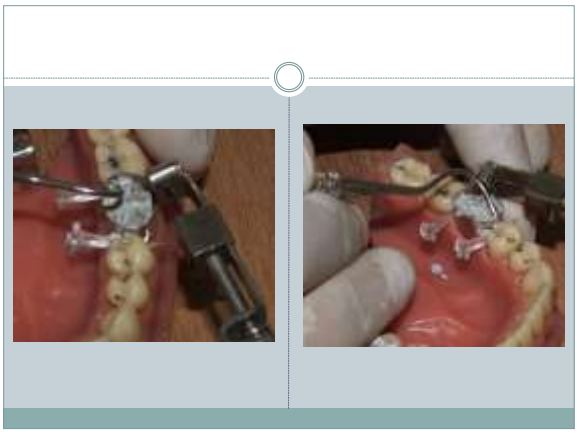
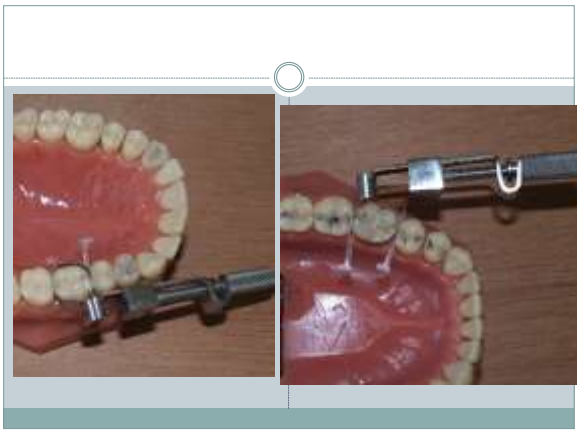


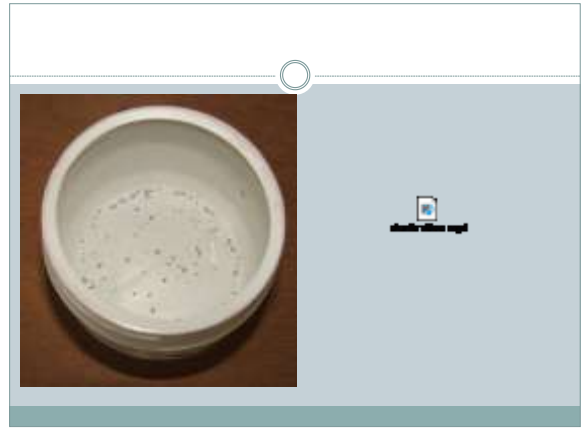
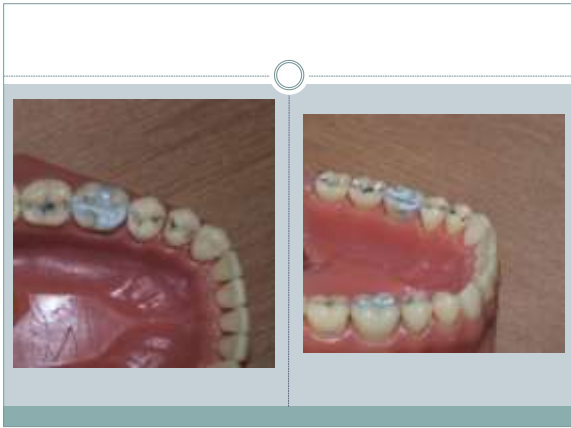
Check occlusion



Proximal amalgam placement







Dental mercury hygiene recommendations

JADA 2003

- Amalgam contains mercury
- Some Scandinavian countries has banned the use of amalgam.
- ADA and BDA are against such ban. Latest statement released last July.

GENERAL MERCURY HYGIENE RECOMMENDATIONS

- Training for the involved staff.
- Remove professional clothing before leaving the surgery

OFFICE settings

- Well ventilated.
- Use proper work area design to facilitate spill containment and cleanup. Floor coverings should be non absorbent, seamless and easy to clean.
- Periodically check the dental operator atmosphere for mercury vapour. This may be done using dosimeter badges or through the use of mercury vapour analyzers for rapid assessment after any mercury spill or cleanup procedure.

HYGIENE RECOMMENDATIONS DURING PREPARATION AND PLACEMENT OF AMALGAM

- Use only pre-capsulated amalgam alloys.
- Use an amalgamator with a completely enclosed arm.
- If possible, recap single-use capsules after use, store them in a closed container and recycle them.
- Use care when handling amalgam. Avoid skin contact with mercury or freshly mixed amalgam.
- Use high-volume evacuation systems (fitted with traps or filters) when finishing or removing amalgam.

Mercury spills

- Never use household cleaning products, in particular those containing Ammonia or Chlorine.
- Never use vacuum cleaners.
- Never allow mercury to go down the drain.
- Never use a paint brush to remove mercury

Use of amalgam separator

Amalgam waste management

- http://www.ada.org/prof/resources/topics/topics_a_malgamwaste.pdf

Information included are required for the purpose of examination.

The quality of a person's life is in direct proportion to their commitment to excellence, regardless of their chosen field of endeavour.

V.Lombardi